

4*2 HDMI MATRIX

AVLINK™



HX-1442W

USER MANUAL HX-1442W

V1.0

Package Contents-

- 1x HX-1442W Unit
- 1x User Manual
- 1x Power Adapter DC 12V with Lock
- 1x Remote Controller with Battery
- 2x Screws
- 4x Foot Pads

Any thing missed, please contact with your vendor.

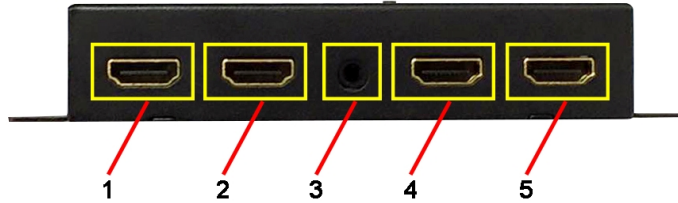
Features

- 4 HDMI inputs and 2 HDMI outputs matrix
- Supports resolution up to 4K x 2K@30Hz or 4K x 2K@60Hz (YCbCr4:2:0) or 1080P@60Hz (12-bit)
- Supports 3D pass-through
- HDCP Compliant
- EDID Copy from OUT port 1
- Supports IR remote control
- Supports RS-232 control

Specifications

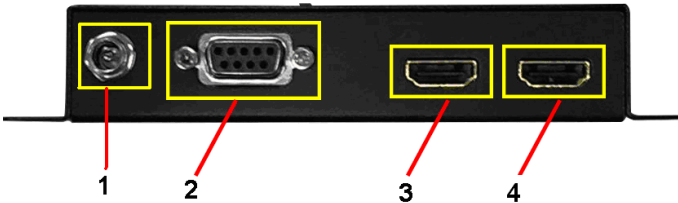
| Function | HX-1442W |
|----------------------|-------------------------------|
| HDMI In Connector | HDMI A-Type Female x 4 |
| HDMI Out Connector | HDMI A-Type Female x 2 |
| IR In | 3.5 φ Stereo Jack x 1 |
| RS-232 Port | 9 Pin Female D Type Connector |
| Max. Resolution | 4K x 2K |
| Power Adapter (Min.) | DC 12V with Lock |
| Housing | Metal |
| Dimensions (LxWxH) | 150 x 80 x 25 mm |
| Weight | 305 g |

FRONT VIEW



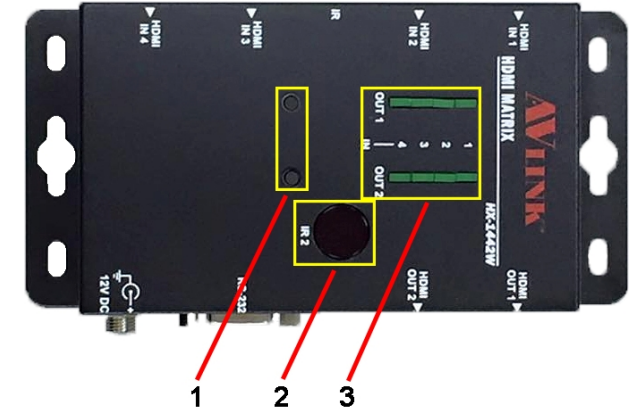
1. HDMI IN1
2. HDMI IN2
3. IR IN
4. HDMI IN3
5. HDMI IN4

REAR VIEW



1. DC JACK
2. RS-232
3. HDMI OUT2
4. HDMI OUT1

TOP VIEW



1. TACK SWITCH
2. IR2
3. LED

Installation

1. Turn off the HDMI source and HDMI display.
2. Connect the HDMI cable between the HDMI source and the "HDMI IN1 or IN2" port of HX-1442W.
3. Turn on the HDMI source and display .
4. Select source by TACK SW, IR or RS-232

(Optional) IR Receiver Cable Install

Put it into the HX-1442W "IR IN" port and place the IR Receiver Cable, so that you can point to it easily with your IR remote controller.

RS-232 Control

Connect the RS-232 cable between the PC and the "RS-232" port of HX-1442W.

Key in the command you can change source to output

Command List:

- "Switch 1 1" OUT1→IN1
- "Switch 1 2" OUT1→IN2
- "Switch 2 1" OUT2→IN1
- "Switch 2 2" OUT2→IN2
- "Switch 3 1" OUT3→IN1
- "Switch 3 2" OUT3→IN2
- "Switch 4 1" OUT4→IN1
- "Switch 4 2" OUT4→IN2

Additional Option

Select any additional options you may require.

1. IR Receiver Cable

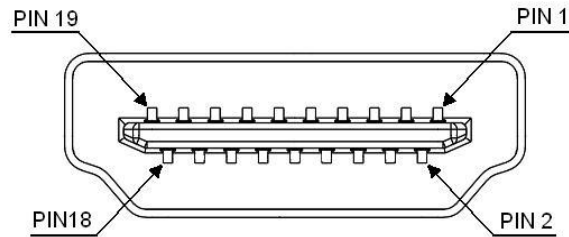
GND

+5V

Sig



Technical Specifications Output Signal



| Pin # | Signal | Pin # | Signal |
|-------|--------------------|-------|------------------------------|
| 1 | TMDS Data 2+ | 11 | TMDS Clock Shield |
| 2 | TMDS Data 2 Shield | 12 | TMDS Clock - |
| 3 | TMDS Data 2- | 13 | CEC |
| 4 | TMDS Data 1+ | 14 | Reserved (N.C. on device) |
| 5 | TMDS Data 1 Shield | 15 | SCL |
| 6 | TMDS Data 1- | 16 | SDA |
| 7 | TMDS Data 0+ | 17 | DDC/CEC Ground |
| 8 | TMDS Data 0 Shield | 18 | +5 Power |
| 9 | TMDS Data 0- | 19 | Hot Plug Detect |
| 10 | TMDS Clock+ | | |

© C&C TECHNIC TAIWAN CO., LTD. All rights reserved.

Trademarks:

All the companies, brand names, and product names referred to this manual are the trademarks or registered trademarks belonging to their respective companies.